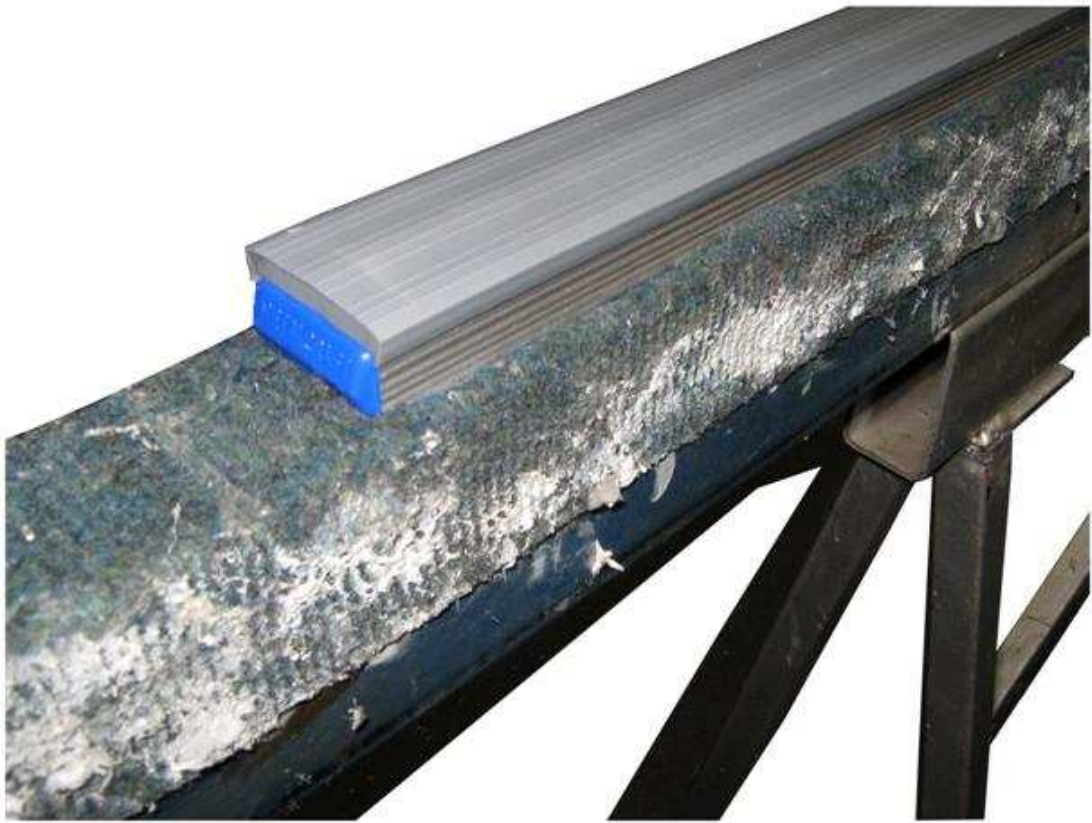


THE GLASS RACKING COMPANY

Innovation by Design

TRESTLE TOPPER



Trestle Topper has been designed for window fabricators, providing a superior polymer surface on which to fabricate window frames. Trestle Topper secures onto existing timber or steel trestles and tables which are traditionally clad with carpet.

GET FULL PRODUCT CATALOGUES ONLINE AT
WWW.THEGLASSRACKINGCOMPANY.COM

THE COMPONENTS

The Glass Racking Company aluminium channel section extrusion is T6 aluminium with a grooved top for fitting the polymer. The dimensions of the aluminium extrusion are 40mm x 14mm and up to 6500mm long. Trestle Topper is secured to the top of the existing trestle or table using screws or fixings through the bottom of the channel section.

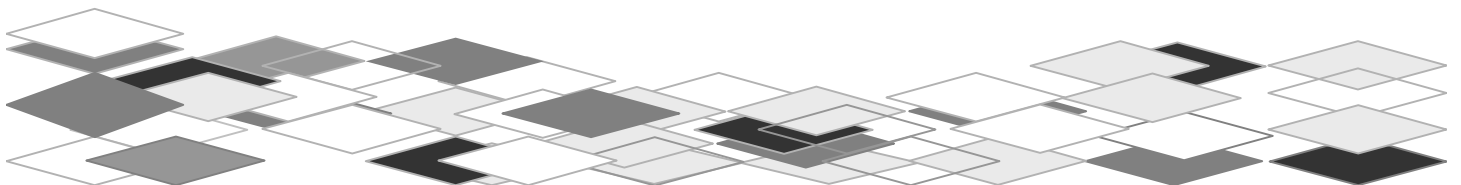


The Glass Racking Company non-marking polymer fits into the groove in the aluminium extrusion. Key features are :

1. The edge overhangs the aluminium extrusion to prevent the window frame from touching the hard surfaces.
2. The polymer has a raised centre to assist with aiding swarf to roll off the polymer, and is ribbed to assist with gripping onto the window frame.
3. The soft texture allows heavier window frames to sink into the polymer for greater support
4. Small Joint Sealer, Butinol and other rubber products peel off the polymer when dry or can be wiped off with cleaners when wet



The complete system is available cut to the lengths required with plastic inserts for the ends for a set price per metre, plus freight to site.

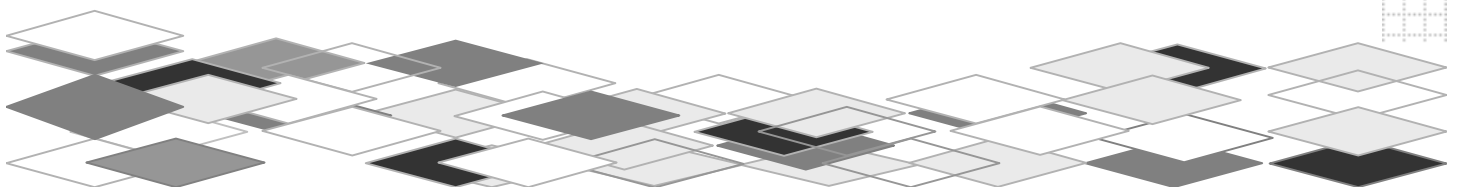


BENEFITS OF TRESTLE TOPPER

- **Swarf does not stick to this product as with carpets, hence there is a reduction in scratching and damage to window frames during fabrication**
- **Swarf sitting on the polymer is easily identified and blown off for a clean work surface**
- **Glues and rubbers used in the window fabrication process no longer matt the carpet into “lumps” reducing the flatness of the work surface**

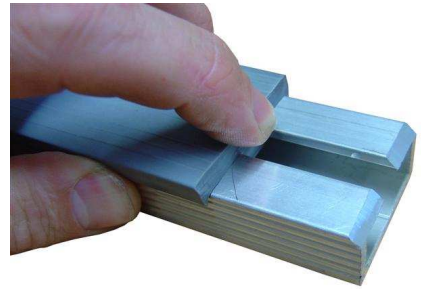
QUOTES FROM USERS OF TRESTLE TOPPER

- **“Trestle Topper is a great substitute for carpet. I’m all in favour. They’re doing the job just fine”**
John Rundle, Ultimate Door and Window Company,
Timaru
- **“... working a treat. The metal grips onto the rubber better and we get less damage to our frames. Any swarf rolls off the rubber and it’s easier to blow down. This product is far better than what we had”**
Brian McLeod, Highlight Aluminium, Milton, Otago

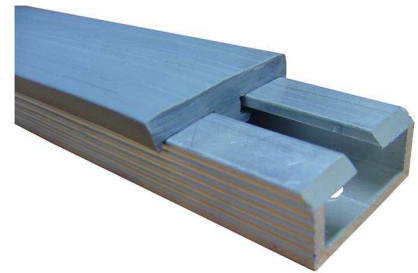


TIPS FOR INSTALLATION

The Glass Racking Company polymer can be pulled back to expose the aluminium extrusion when securing. This is often faster than removing the end caps and polymer completely.



When butting two sections at right angles, chamfer the top corner of the aluminium extrusion to allow for the polymers to butt together neatly



PRICING

Trestle Topper is provided cut to any length with end caps. Purchase price is \$25 per metre plus GST for orders over 10 metres. For smaller orders the price is \$30 per metre plus GST. Orders over 30 metres will be individually priced. Pricing excludes freight to site, and is valid until 31 December 2011.

Trestle Topper

Contact us today to discuss your glass and window factory handling needs.

HOW TO PURCHASE

Contact your local representative in Christchurch, Melbourne, Brisbane or Perth.

Trestle Topper
July 2011



The Glass Racking Company

Christchurch:- 03-3603373, Melbourne:- 0427226653, Brisbane:- 0419714005, Perth:- 0449911946

Email: info@theglassrackingcompany.com www.theglassrackingcompany.com

